

GREAT COMMISSION RESEARCH NETWORK OFFICERS
(formerly: The American Society for Church Growth)

President:



Dr. Bob Whitesel
Associate Professor
Wesley Seminary at Indiana Wesleyan University
E-mail: bob.whitesel@indwes.edu
(765) 677-1038

Secretary:



Dr. M. Alan McMahan
Associate Professor, General Editor of the GCRJ
Cook School of Intercultural Studies
Biola University
E-mail: alan.mcmahan@biola.edu

Treasurer:



Dr. Gary L. McIntosh
Professor of Christian Ministry and Leadership
Talbot School of Theology
Biola University
E-mail: cgnet@earthlink.net

159

GCRN Office

Coordinator:

Diana Alfonso
Cook School of Intercultural Studies
Biola University
13800 Biola Ave.
La Mirada, CA 90638
E-mail: gcrn@biola.edu
(562) 903-4844 ext. 5691

GREAT COMMISSION RESEARCH NETWORK
GREATCOMMISSIONRESEARCH.NET
(Formerly: The American Society for Church Growth)

What is the Great Commission Research Network or GreatCommissionResearch.net?

The Great Commission Research Network is a worldwide and professional association of Christian leaders whose ministry activities are based on the basic and key principles of church growth as originally developed by the late Donald McGavran. Founded by renowned missiologists George G. Hunter III and C. Peter Wagner, the GreatCommissionResearch.net (formally the American Society for Church Growth) has expanded into an affiliation of church leaders who share research, examine case studies, dialogue with cutting-edge leaders, and network with fellow church professionals who are committed to helping local churches expand the kingdom through disciple-making

Who Can Join the GCRN?

GCRN membership is open to all who wish a professional affiliation with colleagues in the field. The membership includes theoreticians, such as professors of church growth, and practitioners, such as pastors, denominational executives, parachurch leaders, church planters, researchers, missions leaders, and consultants. Some members specialize in domestic or mono-cultural church growth, while others are cross-culturally oriented.

Why Join the GCRN?

The GCRN provides a forum for maximum interaction among leaders, ministries, and resources on the cutting edge of Great Commission research.

The Annual Conference of the Great Commission Research Network (typically held in early November each year) offers the opportunity for research updates information on new resources and developments, as well as fellowship and encouragement from colleagues in the field of church growth. Regular membership in GCRN includes a subscription to the *Great Commission Research Journal*.

How Do I Join the GCRN?

For further information on membership, the annual meeting and registration contact:

Diana Alfonso
Great Commission Research Network
School of Intercultural Studies
Biola University
13800 Biola Ave.
La Mirada, CA 90639
Phone: (562) 903-4844 ext. 5691
www.greatcommissionresearch.net
E-mail: gcrn@biola.edu

161

Membership Benefits

Network affiliation with leading writers, consultants, denominational leaders, professors of evangelism and church growth, pastors, church planters, researchers, and mission leaders

Subscription to the Great Commission Research Journal

Discounts for Annual Conference Registration

Listing of your contact information on the GCRN website in our Membership Directory

Membership fees

\$75.00/year (includes a free subscription to the Journal)

Multiple Year Memberships: \$130 for 2 years; \$180 for 3 years

Full-time Student Membership: \$25/year (does not include the Journal)

The Donald A. McGavran Award

Once a year, the Great Commission Research Network (formerly the American Society for Church Growth) presents the Donald A. McGavran Award to an individual who has made a significant contribution to the Church Growth Movement in the United States.

The award recipients to date are:

Win Arn	1989	Kent R. Hunter	1999
C. Peter Wagner	1990	R. Daniel Reeves	2000
Carl F. George	1991	Ray Ellis	2002
Wilbert S. McKinnley	1992	John Ellas	2003
Robert Logan	1993	Rick Warren	2004
Bill Sullivan	1994	Charles Arn	2005
Elmer Towns	1994	John Vaughan	2006
Flavil R. Yeakley, Jr.	1995	Waldo Werning	2006
George G. Hunter, III	1996	Bob Whitesel	2007
Eddie Gibbs	1997	Bill Easum	2009
Gary L. McIntosh	1998		

162

ASCG/GCRN Past Presidents:

C. Peter Wagner	1986	John Vaughan	1994
George Hunter III	1987	Gary L. McIntosh	1995–96
Kent R. Hunter	1988	R. Daniel Reeves	1997–98
Elmer Towns	1989	Ray W. Ellis	1999–2000
Eddie Gibbs	1990	Charles Van Engen	2001–2002
Bill Sullivan	1991	Charles Arn	2003–2004
Carl F. George	1992	Alan McMahan	2005–2006
Flavil Yeakley, Jr.	1993	Eric Baumgartner	2007–2008

The
Great Commission
Research Network

Outreach in an eWorld

Innovation, Creativity & Connectivity



Dan
Kimball



Bob
Whitesel
Convener



Rusty Rueff



Ed Stetzer

Nov. 9-11, 2010

Wesley Seminary at
Indiana Wesleyan Univ.
<http://wesley.indwes.edu>



From President Bob Whitesel

This year's conference will bring together leading thinkers on electronic communication, including **Rusty Rueff** (former Vice President of Electronic Arts [EA] and Pepsico), **Dan Kimball** (author and pastor), **Thom Rainer** (author and researcher), **Ed Stetzer** (author and researcher), **Warren Bird** (author and researcher) and others to show you tools and strategies to use the electronic media for communication. You will not find anywhere a more exciting lineup of speakers!

About the Great Commission Research Network

From Incoming President Ed Stetzer

The GCRN is an affiliation of leaders who share research, examine case studies, hear from thought leaders, and network with fellow church leaders who are committed to helping expand the kingdom through effective disciple-making.



Get more info and register today at:
www.GreatCommissionResearch.net



"For me, the professors' missions experience has helped me better understand how I can use my passion to teach English as ministry, and further the Great Commission."

MARK HERBST
(07, M.A. TESOL)

GET EQUIPPED FOR THE GREAT COMMISSION

For over 25 years, the School of Intercultural Studies has been all about the Great Commission. When Jesus said, "go and make disciples of all nations," we believe he meant it. The Clyde and Anna Belle Cook School is committed to continuing and strengthening its tradition of disciple-making - of equipping cross-cultural servants for missions and global impact through doctoral and master's programs in missiology, intercultural studies, linguistics, education and anthropology.

Students like Mark Herbst come to the Cook School of Intercultural Studies with the ambition to impact the world for Christ. They leave with the tools to make it happen.



SOUTHERN CALIFORNIA | 1 800 OK BIOLA | WWW.BIOLA.EDU/COOK/GCR



BIBLICALLY CENTERED
GRADUATE PROGRAMS
TO HELP YOU SERVE THE WORLD
FOR THE LORD JESUS CHRIST

Talbot School of Theology

Crowell School of Business

Rosemead School of Psychology

School of Education

Cook School of Intercultural Studies

School of Professional Studies

Biola's graduate schools equip you to impact the workplace and the world, offering rigorous training from respected faculty who have real-world experience. And you'll learn in an evangelical Christian environment that cares for your spiritual growth as well as your intellectual development. Discover how your career can make a difference for Christ - discover the graduate schools of Biola.

For more information visit

www.biola.edu/grad/gcr

or call **562-903-4752**.



INFORMATION FOR SUBSCRIBERS AND WRITERS

Subscription Rates: The subscription rate is \$30 per year for semi-annual issues, \$38 per year for foreign subscriptions. Individual back issues are \$15. All prices are US funds. Subscriptions, renewals, orders, and change-of-address notifications should be sent to: Great Commission Research Journal, Subscription Office-Academic Publications, 13800 Biola Ave, La Mirada, CA 90639-0001 (e-mail: gcr.subscriptions@biola.edu—Phone: 562-944-0351 ext. 5321). Please make checks payable to Great Commission Research Journal.

Submission of Articles: The *Great Commission Research Journal* welcomes articles of original scholarship and of general interest dealing with all aspects of Church Growth, effective evangelism and successful Great Commission strategies. Reasoned responses to past articles will be considered, as well as book reviews. All manuscripts should not have been published elsewhere unless specifically approved by the editor.

- Send two hard copies of the manuscript and an electronic copy on CD or via e-mail in Microsoft Word. The author's name should appear only on a removable cover sheet. Before acceptance, submissions will be "masked" reviewed by appropriate referees.
- Follow the guidelines for style found in *The Chicago Manual of Style* or K.L. Turabian's *Manual for Writers*.

- Include an abstract of no more than 100 words on a separate document.
- In general, articles should be 2500–6000 words in length, excluding tables, figures, and references. All figures and graphics files should be included in separate documents. Book reviews should be 3 to 5 pages and responses 7 to 10 pages in length.
- Include the following current vita information in a short biographical sketch (no more than 100 words) for each writer: contact information, title, degree(s), and institution(s) where earned, and specialization(s).
- If not accepted for publication, manuscripts will only be returned if first-class postage is provided. If accepted for publication, we reserve the right to edit for usage and style. Upon acceptance, the author must submit a signed Copyright Agreement.
- All manuscripts will be acknowledged promptly and processed as quickly as possible. Appearance of accepted articles in print is approximately six months or as forthcoming article backlog allows. Contributors receive a complimentary copy of the issue in which their article appears as well as a PDF version upon request.

167

Inquiries, Submissions, and Correspondence

- All communication concerning subscriptions, change of address, back issue and article reprint orders, and nonreceipt of an issue should be sent to the GCR Subscriptions Office, Biola University, 13800 Biola Ave., La Mirada, CA 90639-0001. Phone: 562-944-0351 x5321, Fax: 562-906-4547, e-mail: gcr.subscriptions@biola.edu
- Articles related to North America should be submitted to Phil Stevenson, North American Editor, 2081 Land End Loop, Roseville, CA 95747. Phone: 317-468-3392, e-mail: pstevenson8@gmail.com.
- Book reviews should be submitted to J.D. Payne, Book Review Editor, Church Planting Center, The Southern Baptist Theological Seminary, 2825 Lexington Road, Louisville, KY 40280, e-mail: jpayne@sbts.edu.
- Inquiries and correspondence related to dissertation reviews should be sent to Gary McIntosh, Dissertation Editor, Talbot School of Theology, Biola University, 13800 Biola Ave., La Mirada, CA 90639-0001. Phone: 562-903-6000 x5559, e-mail: cgnet@earthlink.net.
- All submissions from outside North America and all other correspondence relating to the journal should be directed to Alan McMahan, General Editor, Cook School of Intercultural Studies, Biola University, 13800 Biola Ave., La Mirada, CA 90639-0001. Phone: 562-903-4844, ext. 3269; Fax: 562-903-4851, e-mail: editor.gcr@biola.edu.

To receive information about CSICS's programs, or an application packet for admission, send your name and address to: Office of Admissions, Biola University, 13800 Biola Avenue, La Mirada, California 90639

PUBLISHED BY THE COOK SCHOOL OF INTERCULTURAL STUDIES AT BIOLA UNIVERSITY
IN COLLABORATION WITH THE GREAT COMMISSION RESEARCH NETWORK

great commission research journal

For admissions information only, call:
TOLL FREE (800) 652-4652
LOCALLY (562) 903-4752

..... subscription order (include postage & handling)

	1 Year (2 Issues)	Student Rate*
• U.S.A.	<input type="checkbox"/> \$30.00	<input type="checkbox"/> \$20.00
• California Residents (includes 9.75% sales tax)	<input type="checkbox"/> \$32.93	<input type="checkbox"/> \$21.95
• All other countries (air mail)	<input type="checkbox"/> \$38.00	N/A

STUDENT DEGREE IN PROGRESS
168

*EXPECTED GRADUATION DATE

..... back issue / reprints (include postage & handling)

	Back Issue	Article Reprint
• U.S.A.	<input type="checkbox"/> \$15.00	<input type="checkbox"/> \$5.00
• All other countries (air mail)	<input type="checkbox"/> \$20.00	<input type="checkbox"/> \$8.00

Back issues and articles: For a complete listing (with abstracts) visit our website!

On-line ordering is available at: www.biola.edu/gcr

All prices are in U.S. dollars and are subject to change without notice. Payment may be made by check, money order, or credit card and must be in U.S. currency drawn on a U.S. bank, payable to the **great commission research journal**.

..... guarantee

If for any reason you are not satisfied, you may receive a full refund.

Check/Money Order Discover Mastercard Visa

TOTAL ENCLOSED (U.S. CURRENCY ONLY)

CARDHOLDER _____ CARD NUMBER _____ EXPIRATION DATE _____

NAME _____

ADDRESS _____

CITY _____ STATE _____ ZIP/POSTAL CODE _____ COUNTRY _____

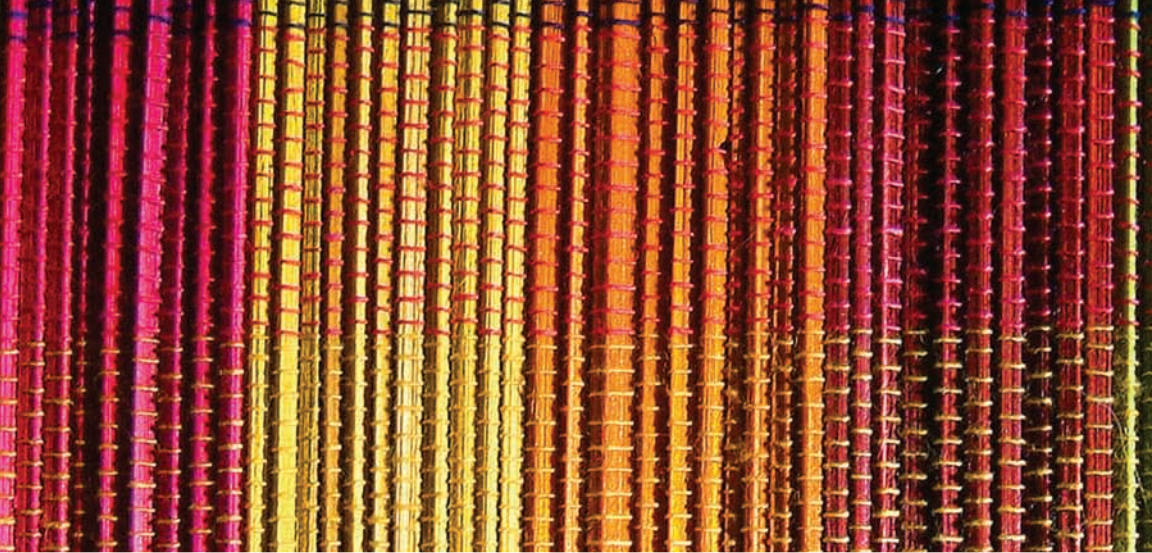
PHONE NUMBER _____ ORGANIZATION _____

E-MAIL ADDRESS _____ The above is a change of address

Photocopy order form, enclose in an envelope with payment, and mail to:
Academic Publications Subscriptions Office, 13800 Biola Avenue, La Mirada, CA 90639

Subscriptions:
Office: (562) 944-0351 x 5321
Fax: (562) 906-4547
E-mail: gcr.subscriptions@biola.edu

Editorial:
Office: (562) 944-0351 ext: 3209
Fax: (562) 903-4864
E-mail: editor.gcr@biola.edu



COOK
SCHOOL OF INTERCULTURAL STUDIES
BIOLA UNIVERSITY

The
Great Commission
Research Network

13800 Biola Avenue
La Mirada, CA 90639-0001

www.biola.edu/gcr